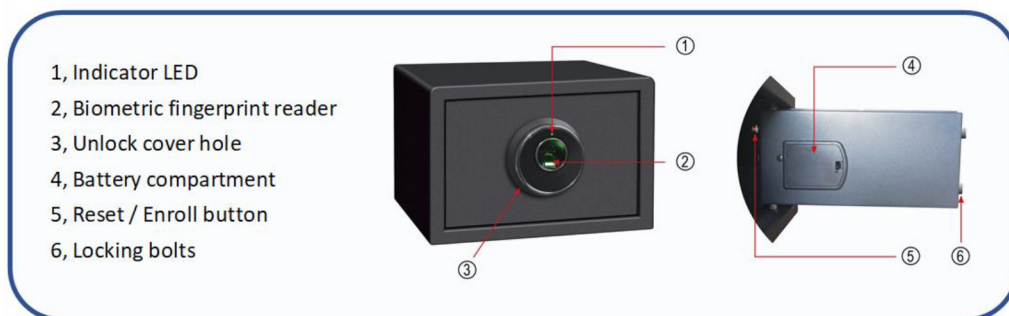


Instruction of Fingerprint Safe

1. Important Notice

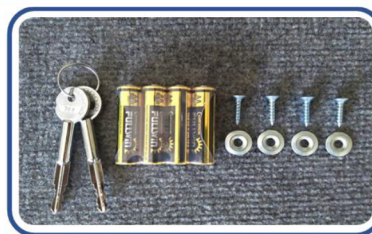
- ◆ Please keep this manual outside of the safe.
- ◆ For the purpose of security, please set with new fingerprint prior to use. **Any fingerprints can lock and unlock safe before register a fingerprint record.**
- ◆ Please be mounting the safe on the floor or wall for security.
- ◆ Please keep the mechanical key in a secure location but don't storage in the safe inside.
- ◆ If the safe will not be used for a long time, please take out the batteries.

2. Product Diagram



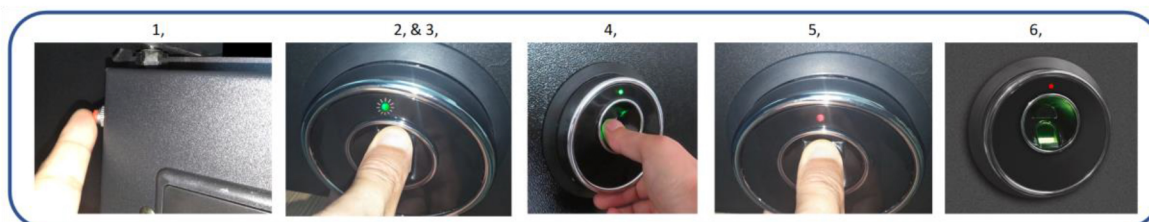
3. Accessories

- ◆ 2 pcs of emergency keys
- ◆ 4 x LR6 \ AA alkaline batteries
- ◆ 4 pcs of #5 x 3/4" Philip drive screw and washer
- ◆ Carpet



4. Register Fingerprint

- 1 In door open status, press the red button in a second only. Then the fingerprint reader will light up.
- 2 Place selected finger on the fingerprint reader within 5 seconds until the green LED light off.
- 3 A long beep with reader shining light is capturing fingerprint.
- 4 A solid green LED will light up that the fingerprint register successfully.
- 5 Three short beep with solid red LED light up means fingerprint register failed. Please press the red button and place finger again or change with new finger till register successfully
- 6 Four short beep with solid red LED light up when pressing the red button means the fingerprint registration is full, the system can store max. 20 fingerprint.



5. Reset the Fingerprint

- ◆ In door open status, press the red button in 8 seconds.
- ◆ A beep sound and solid green LED light up to confirm the record is empty.
- ◆ **In this status, any fingerprints can lock and unlock safe before register a fingerprint record.**

6. To Lock the Safe

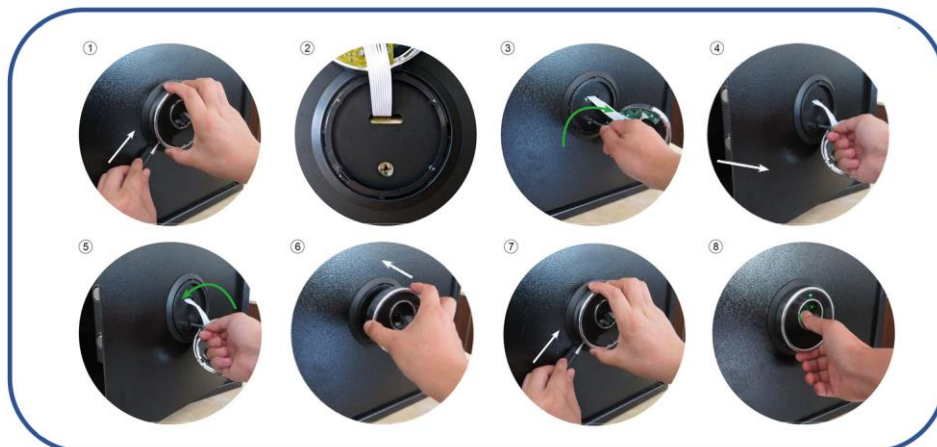
- ◆ Close the door and place any registered fingers on the fingerprint reader, one short beep and solid green LED light will be shown if the door closed successfully.
- ◆ 4 short beep with red LED light means door lock failed. Please remove anything blocked the door and try again.

7. To Unlock the Safe

- ◆ Place any registered fingerprints on the fingerprint reader, two short beep and solid green LED light will be shown if the door closed successfully reader light will be shown.
- ◆ If four short beep and red LED light up, it means door unlock failed. Please place correct fingerprint and try again.
- ◆ The safe will be shut down for 5 minutes if consequence 8 times wrong fingerprint placed. Please try to unlock safe after 5 minutes.

8. Emergency opening with mechanical key

1. Use a phillips screwdriver take off the screw in the left-bottom in the panel.
2. Pull out the display panel, the emergency key hole will be shown.
3. Insert the emergency key into the hole and turn the key to clockwise.
4. Open the door.
5. Turn the key to anticlockwise and pull out the emergency key.
6. Place the display panel back.
7. Fix the screw back.
8. Place any fingers on the fingerprint reader to reset the safe. Please register the fingerprint in safe again if it can unlock or replace with new batteries if safe has no battery.



9. Replace with New Battery

- ◆ If red light turns on for 2 seconds when door locked or unlocked successfully, the batteries must be replaced.
- ◆ Open the door and replace with 4 AA size alkaline batteries in the battery compartment.

10. Installation

- ◆ The product must be mounted by securing either the back or the bottom of the safe. You may select the expansion bolt optional when it is a concrete wall surface or select clamping bolt when it is a wooden wall surface.

